

Plas Pen-y-Glyn Flint Mountain

Landon
Developments



Plas Pen-y-Glyn, Flint Mountain CH6-5BN

Town House / Semi Detached Plots 2, 9, 10, 23 and 24

A versatile family home split over 3 floors providing flexible living space. Master bedroom suite includes fitted wardrobe and luxury en-suite with walk-in shower.

Call: 07880 896733 Email: landondevelopment@btinternet.com Web: www.landondevelopment.co.uk
Landon Developments Limited: Llais Afon, Bryn Sion Hill, Afonwen, CH7 5UL

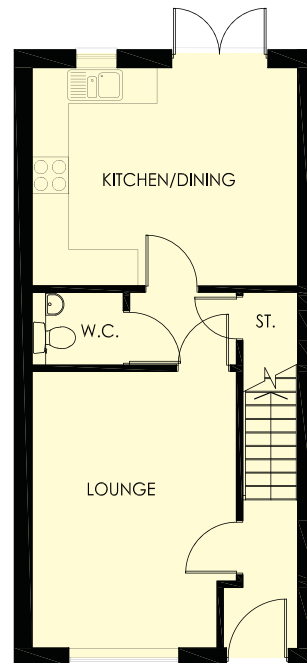
Plas Pen-y-Glyn Flint Mountain

Landon
Developments

Plots 2, 9, 10, 23 and 24

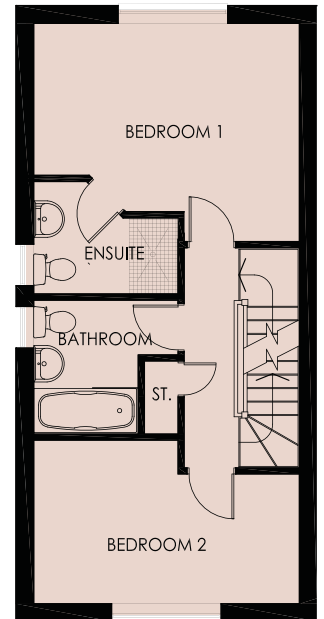
Ground Floor

Room Sizes	Metric	Imperial
Living Room	4.5m x 3.3m	14'9" x 10'9"
Kitchen/Dining	4.3m x 3.5m	14'1" x 11'5"
W.C.	1.1m x 1.4m	3'7" x 4'7"



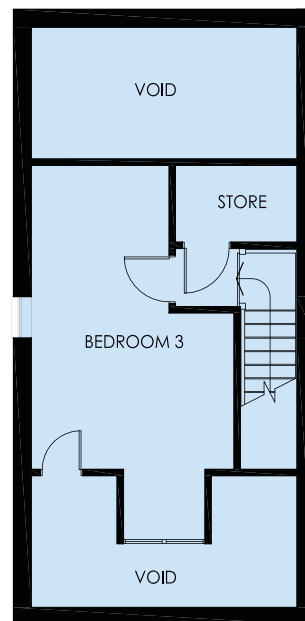
1st Floor

Room Sizes	Metric	Imperial
Master Bedroom	3.5m x 4.3m	11'5" x 14'1"
En-suite	1.8m x 2.3m max	5'11" x 7'7" max
Bedroom 2	2.6m x 4.3m	8'6" x 14'1"
Bathroom	2.1m x 1.7m	6'10" x 5'6"



2nd Floor

Room Sizes	Metric	Imperial
Bedroom 3	2.9m x 4.9m	9'6" x 16'
Store	1.2m x 1.9m	3'11" x 6'3"



Total approx Sq. ft: 1140

All dimensions indicated are approximate. Homes may be a "handed" (mirror image) version of the illustration. Materials and specifications may be subject to change. These illustrations do not form part of any contract.

Call: 07880 896733 Email: landondevelopment@btinternet.com Web: www.landondevelopment.co.uk
Landon Developments Limited: Llais Afon, Bryn Sion Hill, Afonwen, CH7 5UL