

# Plas Pen-y-Glyn Flint Mountain

Landon  
Developments



Plas Pen-y-Glyn, Flint Mountain CH6-5BN

## Detached House Plots 15 and 16

A large split level four bed detached home featuring family room which leads onto a generous balcony. Additional lounge on first floor takes advantage of the westerly views. Master bedroom suite includes fitted wardrobe and luxury en-suite with walk-in shower.

Call: 07880 896733    Email: [landondevelopment@btinternet.com](mailto:landondevelopment@btinternet.com)    Web: [www.landondevelopment.co.uk](http://www.landondevelopment.co.uk)  
Landon Developments Limited: Llais Afon, Bryn Sion Hill, Afonwen, CH7 5UL

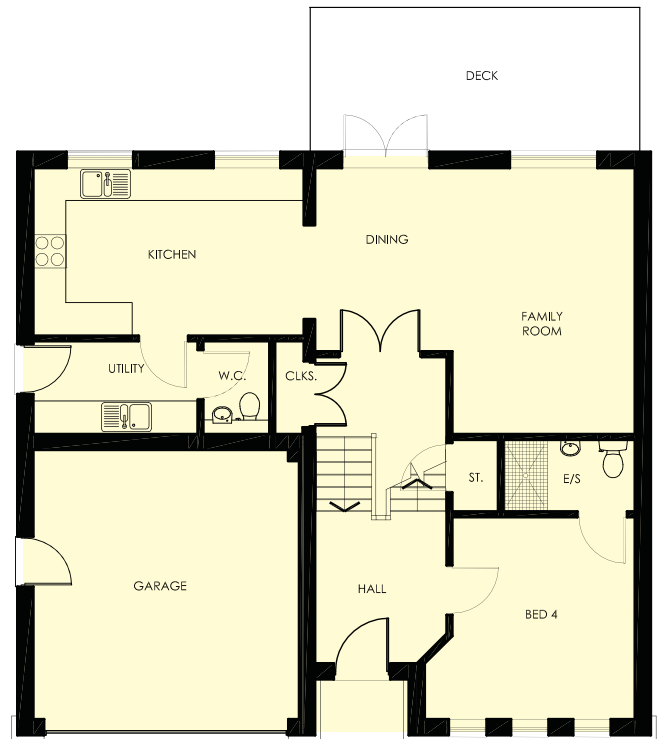
# Plas Pen-y-Glyn Flint Mountain

Landon  
Developments

Plots 15 & 16

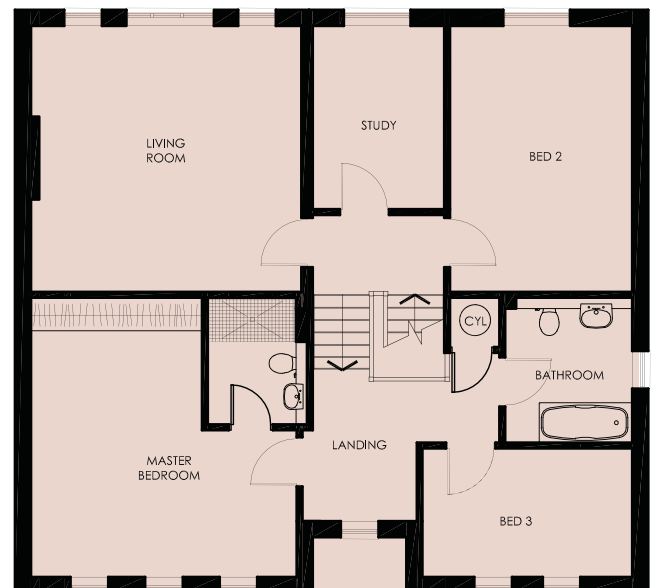
## Ground Floor

Room Sizes	Metric	Imperial
Kitchen	4.83m x 2.9m	15'10" x 9'6"
Utility	1.57m x 2.9m	5'2" x 9'6"
Dining/Family room	5.76m x 4.8m	18'11" x 15'9"
Bedroom 4	3.68m x 3.59m	12'1" x 11'9"
En-suite	2.32m x 1.24m	7'7" x 4'8"



## 1st Floor

Room Sizes	Metric	Imperial
Living room	4.85m x 4.78m	15'11" x 15'8"
Study	2.30m x 3.29m	7'7" x 10'9"
Master bedroom	5.0m max x 4.79m	16'5" max x 15'8"
En-suite	1.75m x 2.25m	5'9" x 7'4"
Bedroom 2	4.78m x 3.29m	15'8" x 10'9"
Bedroom 3	3.75m x 2.28m	12'4" x 7'6"
Bathroom	2.28m x 2.59m	7'6" x 8'6"



Total approx Sq. ft: 2012

All dimensions indicated are approximate. Homes may be a "handed" (mirror image) version of the illustration. Materials and specifications may be subject to change. These illustrations do not form part of any contract.

Call: 07880 896733 Email: [landondevelopment@btinternet.com](mailto:landondevelopment@btinternet.com) Web: [www.landondevelopment.co.uk](http://www.landondevelopment.co.uk)  
Landon Developments Limited: Llais Afon, Bryn Sion Hill, Afonwen, CH7 5UL