

# Plas Pen-y-Glyn Flint Mountain

Landon  
Developments



Plas Pen-y-Glyn, Flint Mountain CH6-5BN

## Detached House Plots 13 and 14

A large split level four bedroom detached home featuring family room with vaulted ceiling and fully glazed gable end. This area leads onto a generous balcony. Additional lounge on first floor takes advantage of the westerly views. Master bedroom suite includes fitted wardrobe and luxury en-suite with walk-in shower.

Call: 07880 896733    Email: [landondevelopment@btinternet.com](mailto:landondevelopment@btinternet.com)    Web: [www.landondevelopment.co.uk](http://www.landondevelopment.co.uk)  
Landon Developments Limited: Llais Afon, Bryn Sion Hill, Afonwen, CH7 5UL

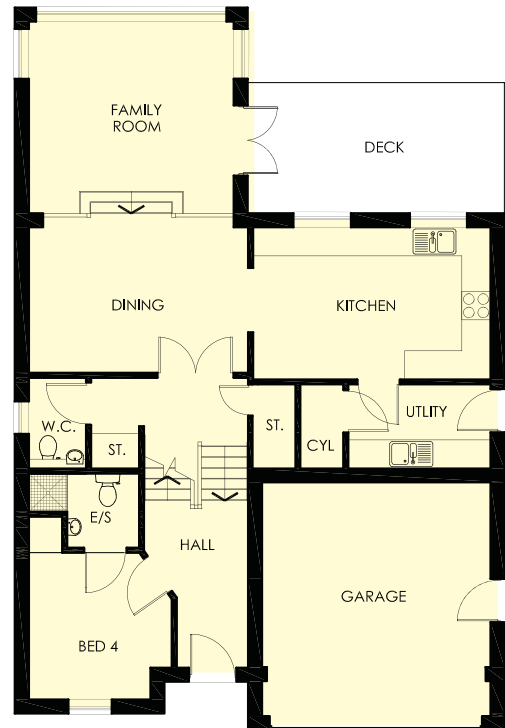
# Plas Pen-y-Glyn Flint Mountain

Landon  
Developments

Plots 13 & 14

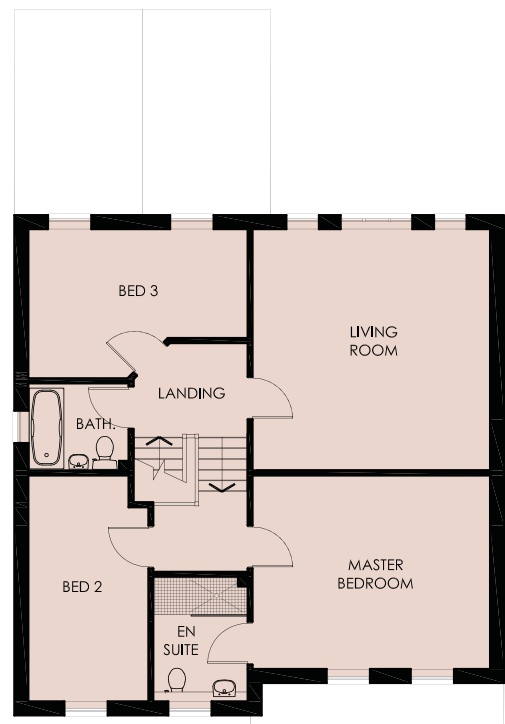
## Ground Floor

Room Sizes	Metric	Imperial
Kitchen	4.89m x 3.1m	16'0" x 10'2"
Utility	1.7m x 2.8m	5'7" x 9'2"
Dining	3.0m x 4.52m	9'10" x 14'10"
Family room	3.92m x 4.2m	12'10" x 13'9"
Study	2.98m x 2.9m	9'9" x 9'6"
En-suite	1.48m max x 2.25m max	4'10" max x 7'4" max
Garage	4.82m x 4.71m	15'9" x 15'5"



## 1st Floor

Room Sizes	Metric	Imperial
Living room	4.8m x 4.98m	15'9" x 16'4"
Master bedroom	3.98m x 4.9m	13'1" x 16'1"
En-suite	2.45m x 1.85m	8'0" x 6'1"
Bedroom 2	4.67m max x 2.45m	15'4" max x 8'0"
Bedroom 3	4.42m x 3.04m	14'6" x 10'0"
Bathroom	1.7m x 1.96m	5'7" x 6'5"



Total approx Sq. ft: 1936

All dimensions indicated are approximate. Homes may be a "handed" (mirror image) version of the illustration. Materials and specifications may be subject to change. These illustrations do not form part of any contract.

Call: 07880 896733 Email: [landondevelopment@btinternet.com](mailto:landondevelopment@btinternet.com) Web: [www.landondevelopment.co.uk](http://www.landondevelopment.co.uk)  
Landon Developments Limited: Llais Afon, Bryn Sion Hill, Afonwen, CH7 5UL