

# Plas Pen-y-Glyn Flint Mountain

Landon  
Developments



Plas Pen-y-Glyn, Flint Mountain CH6-5BN

## Detached House Plot 11

A four bedroom detached home with large elevated deck at rear of property accessible from reception rooms. Master bedroom suite includes fitted wardrobe and luxury en-suite with walk-in shower.

Call: 07880 896733    Email: [landondevelopment@btinternet.com](mailto:landondevelopment@btinternet.com)    Web: [www.landondevelopment.co.uk](http://www.landondevelopment.co.uk)  
Landon Developments Limited: Llais Afon, Bryn Sion Hill, Afonwen, CH7 5UL

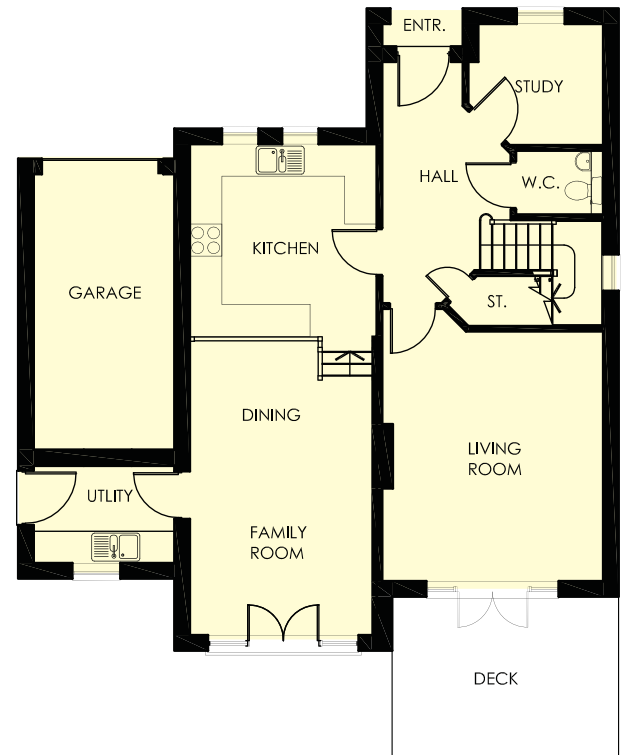
# Plas Pen-y-Glyn Flint Mountain

Landon  
Developments

Plot 11

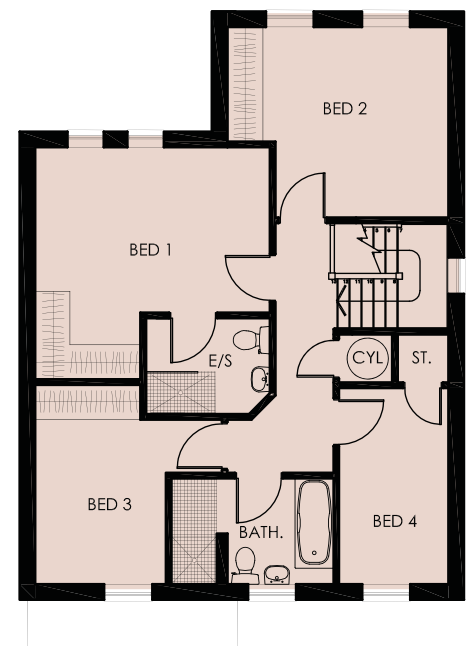
## Ground Floor

Room Sizes	Metric	Imperial
Living room	4.64m x 4.1m	15'3" x 13'5"
Kitchen	3.58m x 3.37m	11'9" x 11'1"
Dining/Family room	5.48m x 3.37m	18'0" x 11'1"
Utility	2.6m x 1.8m	8'6" x 5'11"
Study	2.5m max x 2.25m	8'2" max x 7'4"
W.C.	1.6m x 1.15m	5'3" x 4'9"
Garage	2.64m x 5.1m	8'8" x 16'9"



## 1st Floor

Room Sizes	Metric	Imperial
Bedroom 1	4.35m max x 4.35m	14'3" max x 14'3"
En-suite bathroom	2.35m x 1.75m	7'8" x 5'9"
Bedroom 2	4.1m max x 3.53m	13'5" max x 11'7"
Bedroom 3	3.7m x 2.4m	12'2" x 7'10"
Bedroom 4	3.62m x 2.0m	12'3" x 6'7"
Bathroom	2.93m x 1.93m	9'7" x 6'4"



Total approx Sq. ft: 1635

All dimensions indicated are approximate. Homes may be a "handed" (mirror image) version of the illustration. Materials and specifications may be subject to change. These illustrations do not form part of any contract.

Call: 07880 896733 Email: [landondevelopment@btinternet.com](mailto:landondevelopment@btinternet.com) Web: [www.landondevelopment.co.uk](http://www.landondevelopment.co.uk)  
Landon Developments Limited: Llais Afon, Bryn Sion Hill, Afonwen, CH7 5UL