

# The Brambles

## Drury

Landon  
Developments



Mount Pleasant Road, Drury, Flintshire CH7 3ET

## Plot 4

A four bed detached home with large kitchen/diner. Large utility room. Master bedroom with luxury en suite featuring walk-in shower.

Call: 07880 896733 Email: [landondevelopment@btinternet.com](mailto:landondevelopment@btinternet.com) Web: [www.landondevelopment.co.uk](http://www.landondevelopment.co.uk)  
Landon Developments Limited: Llais Afon, Bryn Sion Hill, Afonwen, CH7 5UL

# The Brambles

## Drury

Landon  
Developments

Plot 4

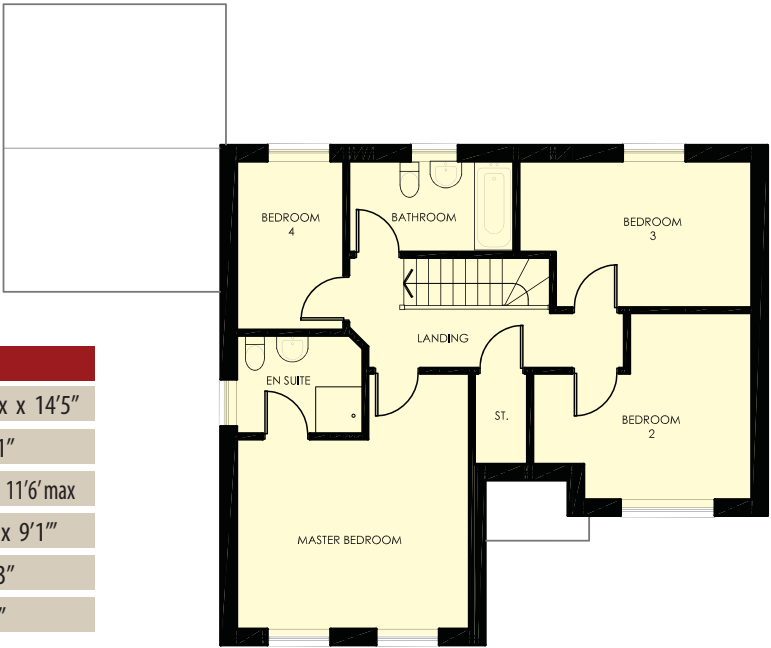
### Ground Floor

Room Sizes	Metric	Imperial
Living Room	5.15m x 4.40m	16'10" x 14'5"
Kitchen/D/room	6.42m max x 3.70m	21'1" max x 12'2"
Utility	3.30m x 1.70m	10'10" x 5'7"
Study	2.55m x 2.35m	8'4" x 7'8"
Garage	5.50m x 3.90m max	18' x 12'10" max



### 1st Floor

Room Sizes	Metric	Imperial
Master Bedroom	4.55m max x 4.40m	14'11" max x 14'5"
En suite bathroom	2.28m x 1.81m	7'5" x 5'11"
Bedroom 2	4.13m max x 3.52m max	13'6" max x 11'6" max
Bedroom 3	4.40m max x 2.78m	14'5" max x 9'1"
Bedroom 4	3.19m x 2.02m	10'5" x 7'3"
Bathroom	3.10m x 1.70m	10'2" x 5'7"



Total approx Sq. ft: 1711

All dimensions indicated are approximate. Materials and specifications may be subject to change. These illustrations do not form part of any contract.